



Enjoy the scenery and your soon-to-be victim's startled eyes as the hidden Redeemer rocket explodes in his or her face.



Don't stand too close or else you'll become fertilizer for the Crooked Forest.



If you stare long enough, you'll see the sun blink. But by the time that happens, you'll be long dead, and deservedly so.

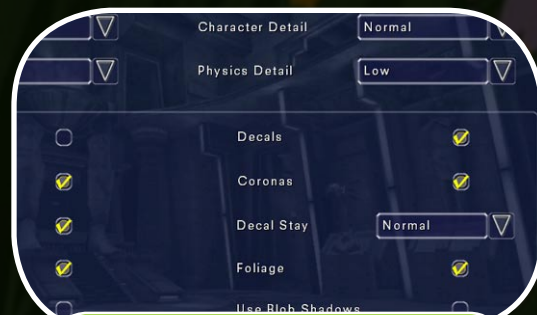
Crooked FOREST

Thank you for downloading the **Crooked Forest**, my first map for **Unreal Tournament 2003**. In this readme, you will find some strategies and tips for getting maximum playability from the map. It's graphically intense, whether it's the normal version or high quality version. Some tips on this page **may improve your frame rate**. Of course, using the latest technology and the latest drivers can improve playability.

So enjoy the **Crooked Forest**! Hope you live long enough to enjoy the scenery :)



Gotta go somewhere quick? Someone on your ass? Jump on one of these suckers and shoot yourself to another part of the map.



In order to get maximum playability out of Crooked Forest, you may have to tweak your UT2003 settings until you get your desired frame rate. Setting Physics to Low and Character Detail to Normal seems to help.